



MinEB-C1 Installation and Users Manual

Rev: 602140

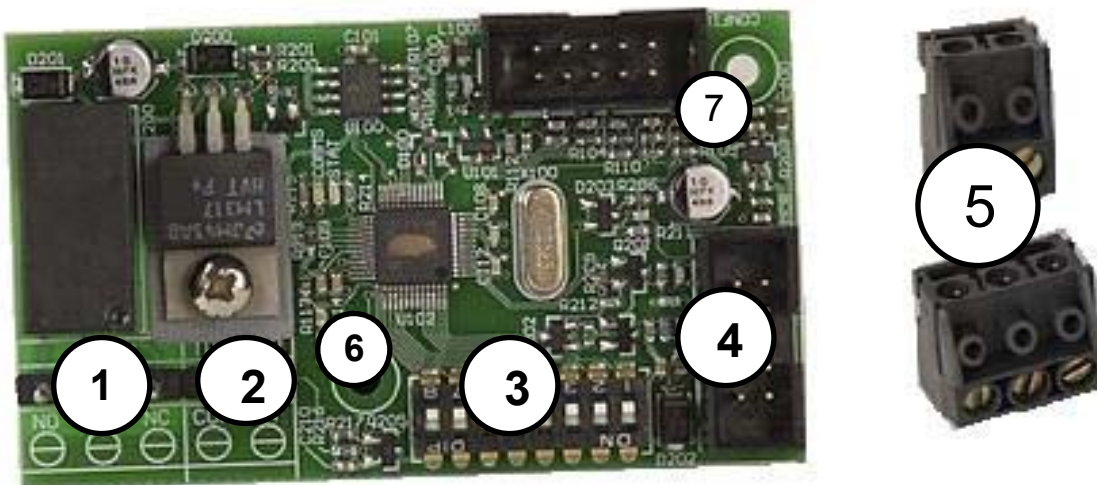
Contents:

Introduction	Page 1
MinEB-C1 layout	
Installation of the MinEB-C1	Page 2
Setting Limits	Page 3
Warranty / Guarantee	Page 4

Introduction

Congratulations on your purchase of the Grifco MinEB-C1. The MinEB-C1 is specifically designed to provide a "Close to Mid Limit Function" for the Maestro Operator.

MinEB layout

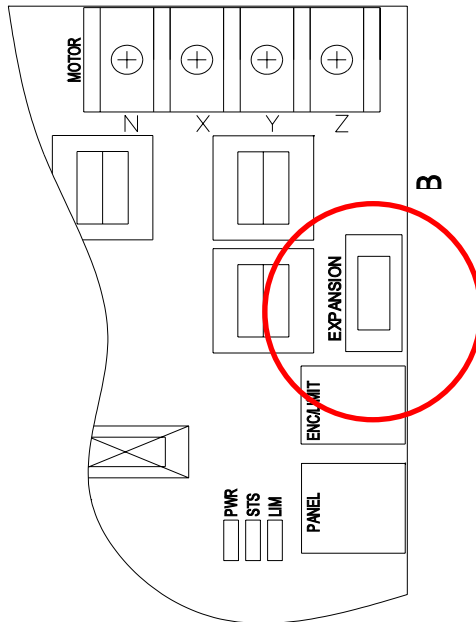


- 1 – Output relay where COM & NO will connect to the COM & CLS input on the MCB
- 2 – Trigger input for NC (normally closed) voltage free contact (break for alarm signal)
- 3 – Dipswitches. (Not applicable on the MinEB-C1)
- 4 – Expansion Cable socket (connects to MCB)
- 5 – Terminal blocks
- 6 & 7 – Mounting holes

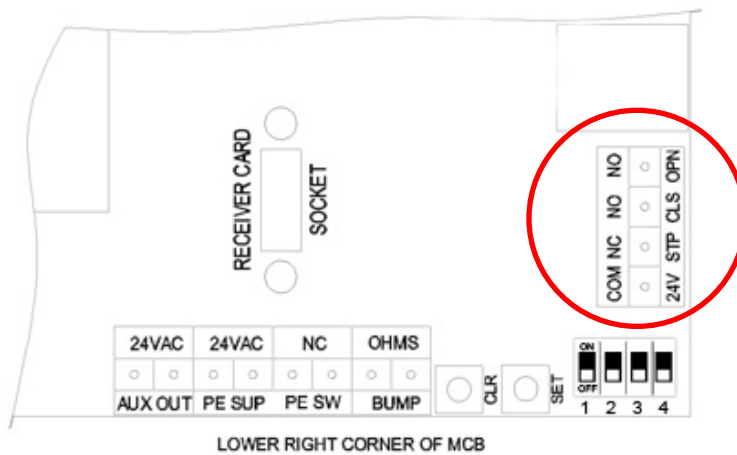
Installation

Installation of the MinEB-C1 is as follows:

- Turn off power to the Maestro operator via isolator or breaker
- Remove Maestro lid exposing the main circuit board (MCB)
- Plug the free end of the MinEB-C1 cable into the EXPANSION socket on the MCB as shown



- Mount the MinEB-C1 to the MCB with the support posts supplied.
- Wire the MinEB-C1 relay COM & NO to the COM & CLS inputs on the MCB.



- Wire the NC (Normally Closed) VOLTAGE FREE Alarm signal to the TRIGGER input on the MinEB
- Replace the lid and resume power to the operator

On the initial power up, the MinEB-C1 will light up signifying connection with the operator.

Setting Close, Alarm and Open Limits

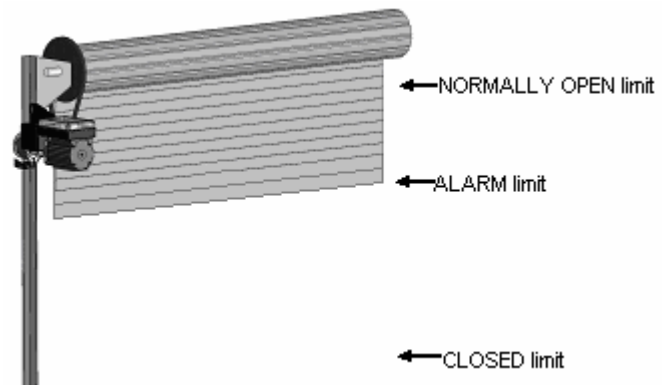
NOTE: The role of the MinEB-C1 will only function once all THREE mandatory limits have been set

To set all three limits follow this procedure:

1. While holding STOP, press the SET button 3 times.
The LIMIT ERROR indicator will start flashing signifying limit setting mode.
2. Position door into the CLOSED position.
The manual hand chain can be used to accurately position the door before pressing set.
3. Press the SET button to save this as the CLOSED position.
The LIMIT ERROR indicator will flash quickly then return flashing slowly.
4. Situate door at required **ALARM LIMIT** (Usually 2.4m from ground level).
5. Press SET again to save this as this position.
The LIMIT ERROR indicator will flash quickly then go out.

Once the CLOSED and ALARM LIMIT has been set:

6. Position the door at ALARM LIMIT point.
7. While holding the UP button, press the SET button 3 times.
The LIMIT ERROR indicator will flash.
8. Now open the door further until the door is located at the NORMALLY OPEN position.
9. Press SET to save this as the NORMALLY OPEN position.
The LIMIT ERROR indicator will quickly flash then go out.



MinEB-C1: Close to Alarm Limit Function

With a MinEB-C1 fitted onto a Standard Maestro, a NC (Normally Closed) voltage free contact such as an alarm signal must be connected to the MinEB-C1 input to allow for normal operation. During normal open operation, the door will reach the mid limit then briefly stop before continuing to the uppermost limit without an additional button press.

Alarm Action

When the door is open to the normally open limit, or anywhere above the alarm limit, the door will go to the Alarm limit and stop when the alarm signal is activated. The MinEB-C1 relay will energise while ever the alarm signal remains open, and therefore the door will move to the Alarm limit. When the signal re closes (alarm state reset) the door shall immediately return to the normally open limit.

When the door is anywhere below the Alarm limit and an alarm signal is activated the door will do nothing.

NOTE: While ever the Alarm signal is activated (i.e. trigger input not bridged) the operator will not function unless in limit setting mode

WARRANTY / GUARANTEE

Chamberlain Australia Pty Ltd herein referred to as "The Company"

- (a) The Company shall guarantee the goods for a period of two years from the date of invoice against any defects in construction or operation arising solely from faulty design, materials or workmanship subject to the following clauses.
- (b) The Company shall at its option, repair, modify or replace defective parts or units at its own expense and within a reasonable time but the Company shall not unless otherwise agreed in writing be liable for costs associated with removal, replacement, transport or travelling expenses incurred by the Purchaser in obtaining the goods and returning them to the Company.
- (c) The Company does not guarantee the goods where:-
 - (i) the defect rises from materials supplied by the Purchaser or a design requested by the purchaser; or
 - (ii) the defect arises from ordinary wear and tear, neglect or misuse by the Purchaser, accident, lack of care, insufficient maintenance, incorrect installation or improper use of the goods; or
 - (iii) the defect arises from force majeure; or
 - (iv) the Purchaser has in any way modified or repaired the goods without the Company's prior written consent; or
 - (v) the Purchaser has not complied with any written or oral instructions concerning the operation and maintenance of the goods; or
 - (vi) the Purchaser is in default in the observance or performance of any other provisions of the contract; or
 - (vii) The Grifco electric motors are used in conjunction with controls other than those assembled and supplied by the Company.
- (d) Where warranty is approved for goods in a used condition, such goods will be repaired or replaced and returned to the purchaser as the Company sees fit. Refunds or credits will only be considered for goods not used and in new, undamaged condition.
- (e) The Company's liability under this guarantee will be strictly limited to repairing or replacing a defective product at the Company's premises, as it may elect.
- (f) The provision of sub-clauses (a) and (b) are stipulated for the benefit of the Purchaser only and are not intended for the benefit of any third party.
- (g) Save for sub-clauses (a) and (b) the Company does not give any warranty or guarantee or make representations whatever in respect of the goods or the fitness of the goods or any part thereof or any particular purposes (whether or not that purpose is known to the Company).

Chamberlain Australia Pty Ltd

15 Dell Rd West Gosford
NSW 2250

Australia

Ph. +61 (02) 43233877

Fax. +61 (02) 43233882

www.grifco.com.au

sales@grifco.com.au

technical@grifco.com.au